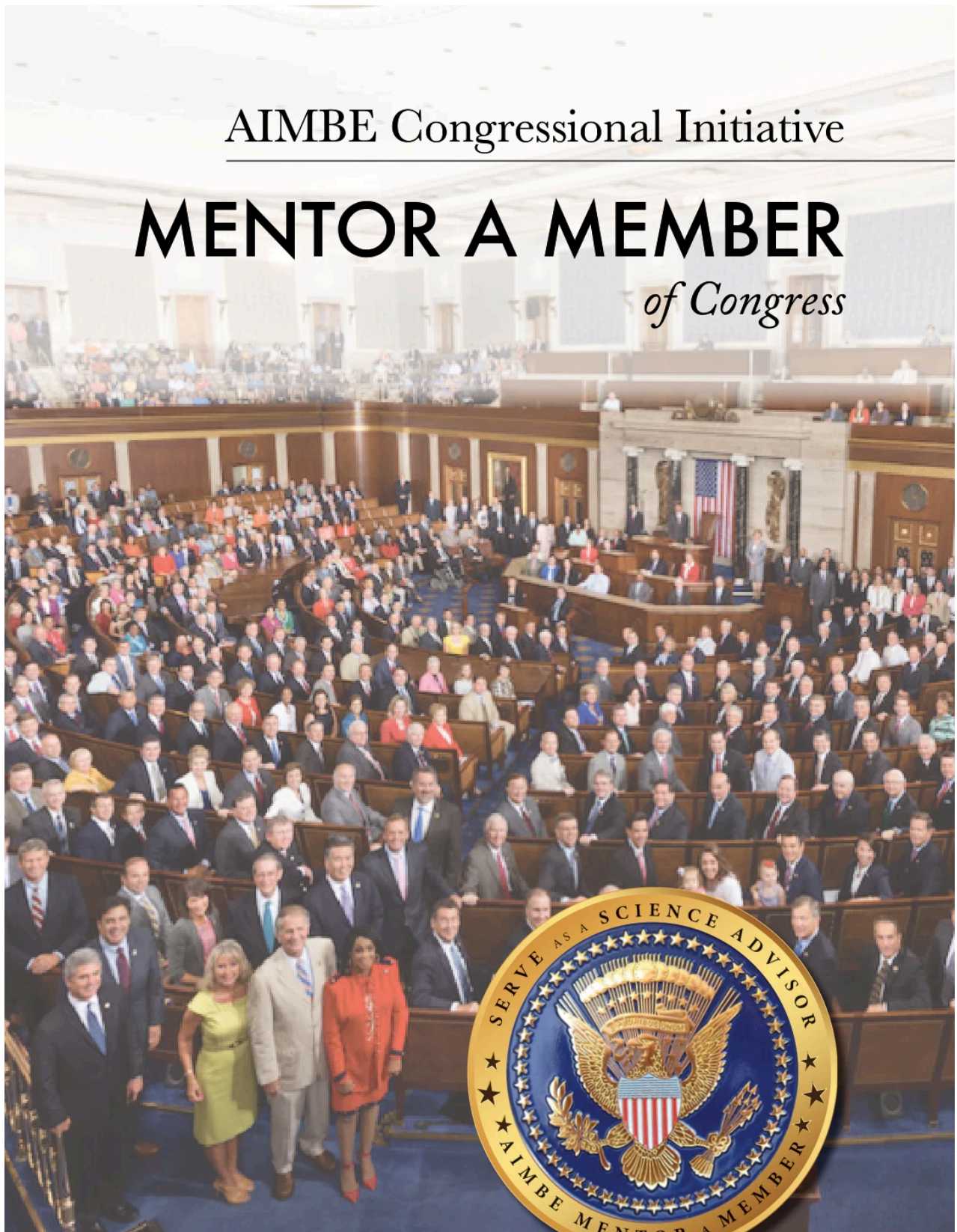


AIMBE Congressional Initiative

# MENTOR A MEMBER *of Congress*



**Become a trusted advisor to your  
Members of Congress**

AIMBE Congressional Initiative

---

# MENTOR A MEMBER *of Congress*

## Why does my congressional visit matter?

Federal funding for science and  
engineering isn't mandatory

Researchers and the scientific community must  
advocate for our nation's scientific agencies.

Research needs long-term  
consistent funding

Spending cuts hurt critical R&D initiatives or  
when funding doesn't meet inflation.

America's innovation ecosystem relies on  
robust national spending for research.

Research spurs the economy. Every \$1 of NIH  
funding generates \$2.21 in economic growth.

## Congressional Visits

# TALKING POINTS

Be prepared to brief your lawmakers  
on the issues below

**Support NIH with a \$3.4 billion increase**

Recent increases in funding still leave NIH underfunded for critical research needs. Congress must provide a strong \$3.4 billion.

**Support NSF with a \$11.9 billion FY 24**

Budget Congress must provide the NSF with a \$11.9 billion agency budget for FY24 to maintain and continue advances to sustain America's leadership for scientific innovation.

# Congressional Visits

## WHAT TO EXPECT

Your visit with Congressional staff is as valuable as with a Member of Congress

### ***Why am I meeting with Congressional staff?***

Congressional staff may be young, but they are the ***eyes and ears for their Member of Congress***. They inform lawmakers on constituent issues and are the workhorses behind legislation.

Presume your audience does not have background on your issue. Don't use jargon. Make your point using conversational, everyday language.

### ***What does a Congressional visit look like?***

Visits are brief, lasting 15-30 minutes. Space is limited, so your visit may take place in the lobby, reception area, or legislator's office.

Don't prepare a powerpoint presentation for your congressional visit - or a monologue. Do bring a small show-and-tell item that brings your talking points to life (not a handout!).

## Congressional Visits

# TELL YOUR STORY

### Make the most out of your Congressional visit by telling a personal story

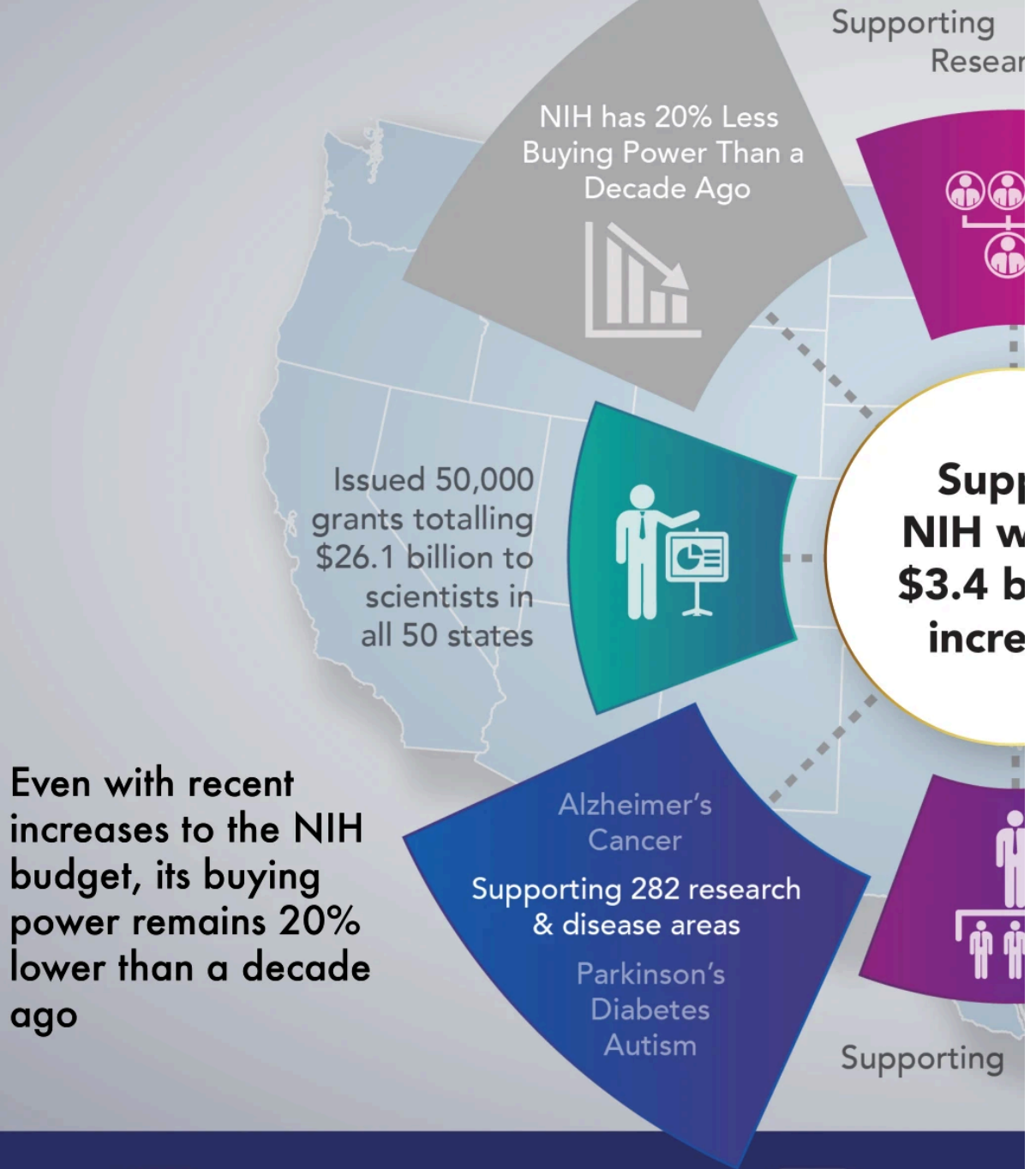
Begin your congressional visit by distributing your business card, and asking for theirs. Introduce yourself as a constituent, identify your institution, and AIMBE. Briefly summarize why you are visiting.

Now, it's time to tell your story. Focus on how your research is critical to patient health, why discovery takes time and federal investment, and relate your research to a discovery or cure. Make it personal and make it memorable.

Next, focus on your talking points on increasing the spending budgets for NIH and NSF.

Lastly, end the visit by thanking them for their time and issuing a 1-page leave-behind. Take a photo and tag to social media!

# INVESTING IN NIH



Alzheimer's

**\$1 trillion by 2050**

By 2050, 14 million people could be living with Alzheimer's, costing \$1 trillion.



**Cure worth**

Each 1.5% reduction in cancer deaths saves \$1 billion to the economy. Cure worth

300,000+  
researchers

41,000 qualified  
research proposals  
go unfunded annually.

Was one of them  
a cure for Alzheimer's?

Support  
with a  
billion  
dollar  
case



Produces More  
Than Twice the  
Agency's Budget  
in Economic Output

NIH budget = <1%  
of total federal budget  
While medical care = 26%  
of federal budget

TIME FOR  
THIS TO FLIP!

*Investments in NIH  
support the work of  
researchers across the  
country whose discoveries  
and innovations save lives  
and improve the health  
and well-being of  
Americans.*

403,000 Jobs

Cancer



Heart Disease

3x GDP

#1 Killer in U.S.

Cancer deaths=\$500 billion  
care is worth \$50 trillion.

By 2035, cardiovascular diseases will affect  
131.2 million people & cost \$1 trillion annually.

# INVESTING IN NSF

Big Ideas *start with*

**386,000**  
Jobs supported by NSF

**DRIVING  
ECONOMIC  
GROWTH**

**NSF**  
**\$11.9**  
**ASK FOR**

NSF accounts for only 4% of federal R&D spending, yet it supports 50% of non-medical basic research at our nation's colleges and universities

**12,700**  
New, competitive grants awarded by NSF

Innovations *started or advanced*



The Internet

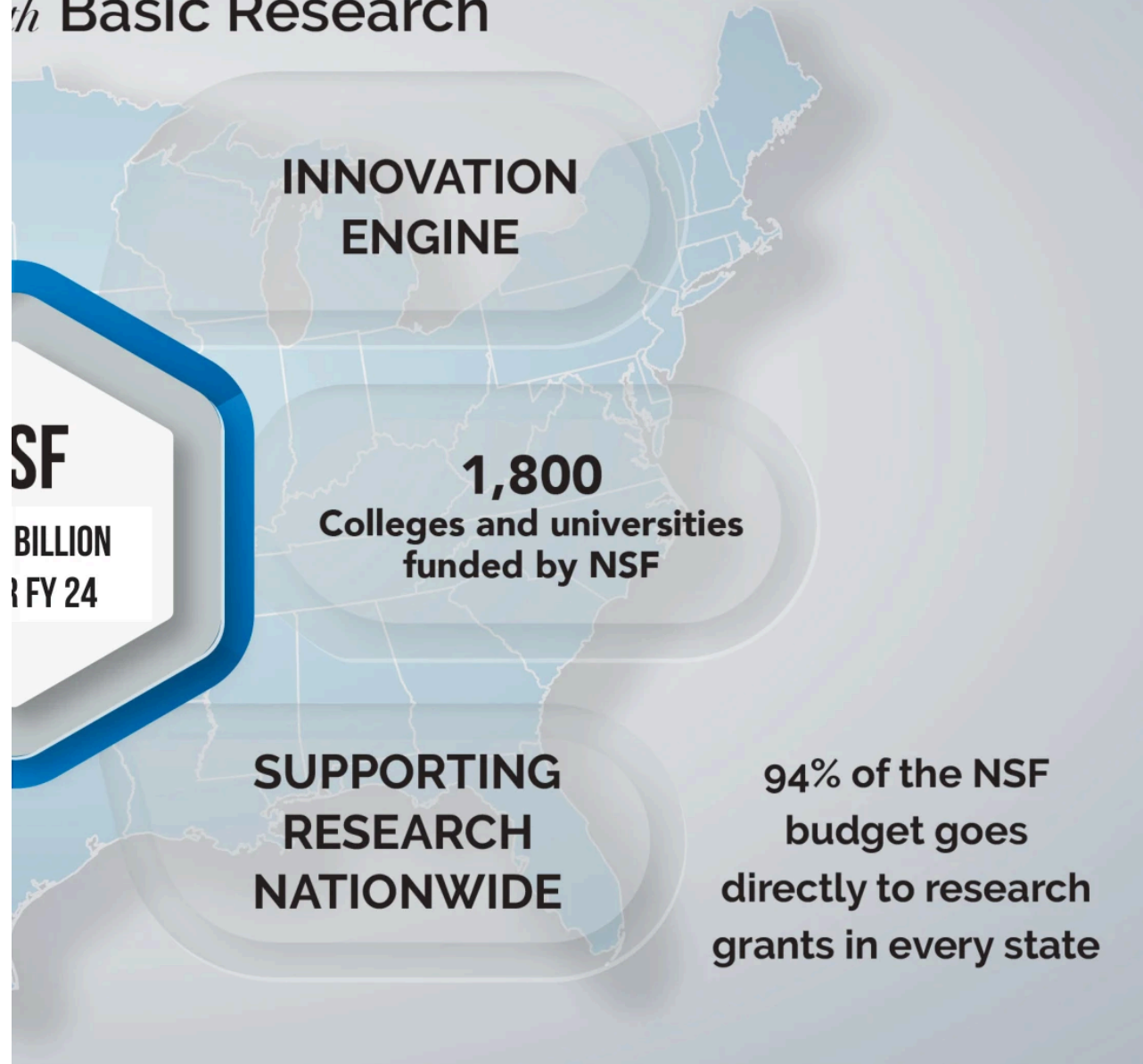
Underpinning the global economy



GPS

Critical for national security

# Basic Research



## Advanced with NSF Funding



Cell Phones

Nanotechnology in electronics



MRI

Helping patients get diagnosed

# Between Meetings



## UNITED STATES CAPITOL

The Capitol Visitor Center is located beneath the East Front plaza of the Capitol at First St and East Capitol St. Pick up your free passes for a 45-minute guided tour!

## LIBRARY OF CONGRESS

Take a 1-hour guided tour of the Jefferson building. Tours are on the hour from 10:30 a.m. to 3:30 p.m. at 1st Street, between Independence Ave and East Capitol St.



## SUPREME COURT

The Supreme Court is on First Street between East Capitol St. and Maryland Ave, adjacent to the Capitol and the Library of Congress. Self-guided tours until 4:30 p.m.

## BOTANIC GARDENS

Established by Congress in 1820, the U.S. Botanic Garden is one of the oldest botanic gardens in North America, adjacent to the Rayburn Building.



## LUNCH OPTIONS

SENATE SIDE: Dirksen Senate Office Building Cafeteria. HOUSE SIDE: Rayburn House Office Building Cafeteria or Longworth House Office Building Cafeteria

**TIP: Prepare for traffic delays and 5-10 minute meetings on time. Late arrivals**

# U.S. CAPITOL

Visitor center



**potential security entrance lines to arrive at arrival will cut meetings short.**



**STANDING UP FOR  
SCIENCE** *on Capitol Hill*

[AIMBE.org/Advocate](https://aimbe.org/Advocate)